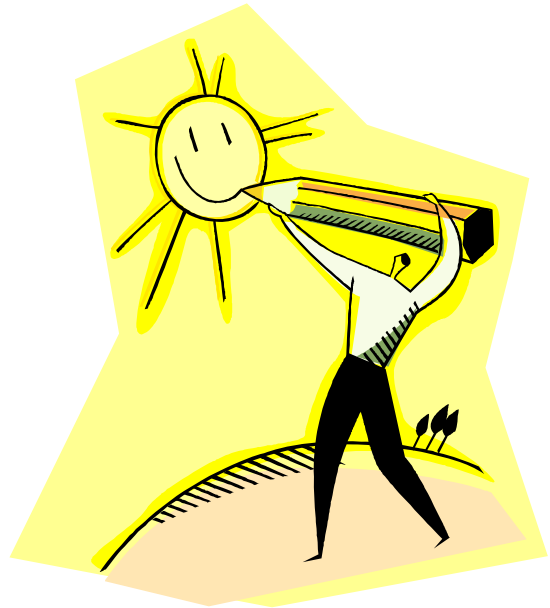


IMAGINE THAT

General Description:

The power of visual representations in strengthening understanding and moving information to long-term memory is well documented in research. Imagine That is an effective, low-preparation structure that encourages students to represent important ideas and concepts through icons or simple pictures.



Directions:

- Working with a partner, students stop at designated points in the learning experience (reading selection, lecture, observation, etc.) to quickly sketch an icon or picture to help remember the idea. Students can sketch the pictures directly in the margins of the text or in their interactive student notebooks.
- After both partners have completed their sketch, they take turns explaining the connections between their picture and the idea/concept.

Extensions:

Use the icons and simple pictures to create study cards for a unit of study.

1. Have students sketch the icon or picture on one side of an index card.
2. On the other side, write a brief description of the idea or concept.
3. Work with a partner to double-check the accuracy of the information before using the cards to study.
4. Use the icon/picture as a visual cue for recalling the idea or concept. Then turn the card over to confirm the response.